

## Winchester Series Wall Bracket



Model Number	Lamping Code	Body Lamping	Circuit	Finish	Finish Accent	Diffuser	Diffuser Accent	Mounting	Louver	Options
<b>WR0816B</b> • W 10" • HT 18" • EXT 13"	AHZ	1-100W A21 (100W)	1	PC	WT	AD	DAC	WM	CR SQ	SIL BL
	DEM	3,900lm LED (22W)	1	PC	WT	AD	DAC	WM	CR SQ	BL D1 SIL
<b>WR1020B</b> • W 12" • HT 22" • EXT 15"	AIB	1-150W A21 (150W)	1	PC	WT	AD	DAC	WM	CR SQ	SIL BL
	FFV	5,400lm LED (33W)	1	PC	WT	AD	DAC	WM	CR SQ	BL D1 D31 SIL
<b>WR1024B</b> • W 10" • HT 24" • EXT 13"	FFW	1-150W A21 (150W)	1	PC	WT	AD	DAC	WM	CR SQ	SIL BL
	FFX	5,400lm LED (33W)	1	PC	WT	AD	DAC	WM	CR SQ	BL D1 D31 SIL
<b>WR1224B</b> • W 14" • HT 27" • EXT 17"	AIF	1-150W A21 (150W)	1	PC	WT	AD	DAC	WM	CR SQ	SIL BL

### SAMPLE CATALOG NUMBER

**Model Number - Lamping Code - Finish - Mounting - Diffuser - Options**

### Scale

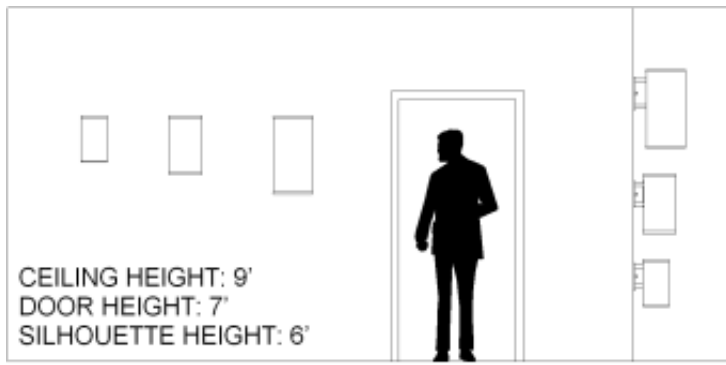
### Abbreviation Key

#### Dimensions

W	Width
HT	Height
EXT	Extension

#### Lamps

100W A21 Medium Base, 100W Max, Incandesent or LED



#### PRODUCT FEATURES

- Fabricated and welded metal housing
- Powder coated metallic finish
- UV stable, white acrylic diffuser (Standard)
- Optional specialty diffuser materials available
- Energy efficient LED or fluorescent lamping
- Wired for single circuit operation (Body Lamping)
- High power factor electronic ballast or LED driver
- Incandescent lamping is Triac or ELV dimmable - consult lamp and dimmer manufacturer for compatibility.
- Optional dimming ballast 120V or 277V (LED or fluorescent lamping)
- Mounts to standard electrical junction box (by others)
- LED Battery Back-Up Available
- UL / cUL or ETL / cETL listed
- Contact Us for more lamping options.

150W A21      150W A21, medium base

#### Finish Types

PC      Powder Coat

#### Finish Accent Types

WT      Wood Trim

#### Diffuser Types

AD      Standard Acrylic Diffuser

#### Diffuser Accent Types

DAC      Diffuser Accent Color

#### Mountings

WM      Wall Mount

#### Louvers

CR      Concentric Ring

SQ      Square Cell

#### Options

SIL      Silhouette Symbol

BL      Bottom Lens

D1      LED 0-10V low voltage control dimming

D31      LED 0-10V Wireless Dimming1