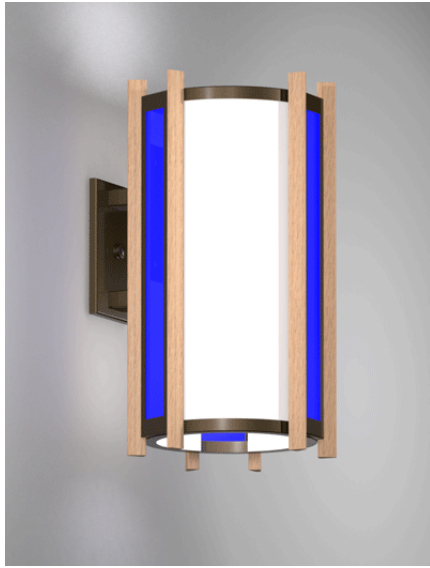


Winchester Series Wall Bracket



Model Number	Lamping Code	Body Lamping	Circuit	Finish	Finish Accent	Diffuser	Diffuser Accent	Mounting	Louver	Options
WR0816B • W 10" • HT 18" • EXT 13"	AHZ	1-100W A21 (100W)	1	PC	WT	AD	DAC	WM	CR SQ	SIL BL
	DEM	3,900lm LED (22W)	1	PC	WT	AD	DAC	WM	CR SQ	BL D1 SIL
WR1020B • W 12" • HT 22" • EXT 15"	AIB	1-150W A21 (150W)	1	PC	WT	AD	DAC	WM	CR SQ	SIL BL
	FFV	5,400lm LED (33W)	1	PC	WT	AD	DAC	WM	CR SQ	BL D1 D31 SIL
WR1024B • W 10" • HT 24" • EXT 13"	FFW	1-150W A21 (150W)	1	PC	WT	AD	DAC	WM	CR SQ	SIL BL
	FFX	5,400lm LED (33W)	1	PC	WT	AD	DAC	WM	CR SQ	BL D1 D31 SIL
WR1224B • W 14" • HT 27" • EXT 17"	AIF	1-150W A21 (150W)	1	PC	WT	AD	DAC	WM	CR SQ	SIL BL

SAMPLE CATALOG NUMBER

Model Number - Lamping Code - Finish - Mounting - Diffuser - Options

Scale

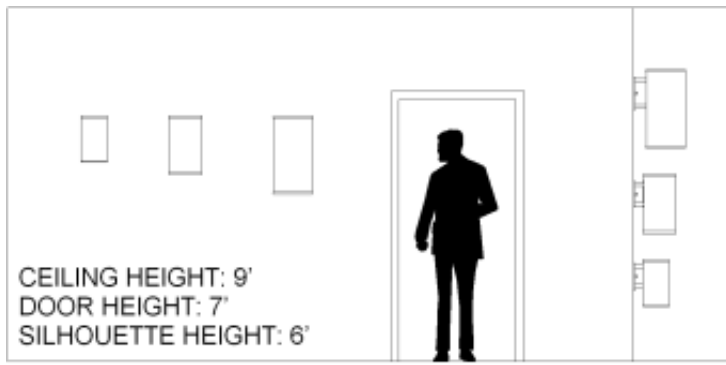
Abbreviation Key

Dimensions

W	Width
HT	Height
EXT	Extension

Lamps

100W A21 Medium Base, 100W Max, Incandesent or LED



PRODUCT FEATURES

- Fabricated and welded metal housing
- Powder coated metallic finish
- UV stable, white acrylic diffuser (Standard)
- Optional specialty diffuser materials available
- Energy efficient LED or fluorescent lamping
- Wired for single circuit operation (Body Lamping)
- High power factor electronic ballast or LED driver
- Incandescent lamping is Triac or ELV dimmable - consult lamp and dimmer manufacturer for compatibility.
- Optional dimming ballast 120V or 277V (LED or fluorescent lamping)
- Mounts to standard electrical junction box (by others)
- LED Battery Back-Up Available
- UL / cUL or ETL / cETL listed
- Contact Us for more lamping options.

150W A21 150W A21, medium base

Finish Types

PC Powder Coat

Finish Accent Types

WT Wood Trim

Diffuser Types

AD Standard Acrylic Diffuser

Diffuser Accent Types

DAC Diffuser Accent Color

Mountings

WM Wall Mount

Louvers

CR Concentric Ring

SQ Square Cell

Options

SIL Silhouette Symbol

BL Bottom Lens

D1 LED 0-10V low voltage control dimming

D31 LED 0-10V Wireless Dimming1