

## Raleigh Series Wall Bracket



Model Number	Lamping Code	Body Lamping	Circuit	Finish	Diffuser	Mounting	Louver	Options
<b>RL0816B</b> • W 8" • HT 16" • EXT 10"	DED	2,100lm LED (15W)	1	PC	AD AG	WM	CR SQ	D1 SIL
	ACK	1-100W A21 (100W)	1	PC	AD AG	WM	CR SQ	SIL
<b>RL1020B</b> • W 10" • HT 20" • EXT 12"	DEE	3,200lm LED (23W)	1	PC	AD AG	WM	CR SQ	D1 SIL
	ACM	1-150W A21 (150W)	1	PC	AD AG	WM	CR SQ	SIL
<b>RL1224B</b> • W 12" • HT 24" • EXT 14"	FEJ	4,400lm LED (33W)	1	PC	AD AG	WM	CR SQ	D1 SIL
	FEI	1-150W A21 (150W)	1	PC	AD AG	WM	CR SQ	SIL
<b>RL1426B</b> • W 14" • HT 26" • EXT 16"	DEG	6,300lm LED (47W)	1	PC	AD AG	WM	CR SQ	D1 SIL
	ACR	2-150W A21 (300W)	1	PC	AD AG	WM	CR SQ	SIL

### SAMPLE CATALOG NUMBER

**Model Number - Lamping Code - Finish - Mounting - Diffuser - Options**

### Scale

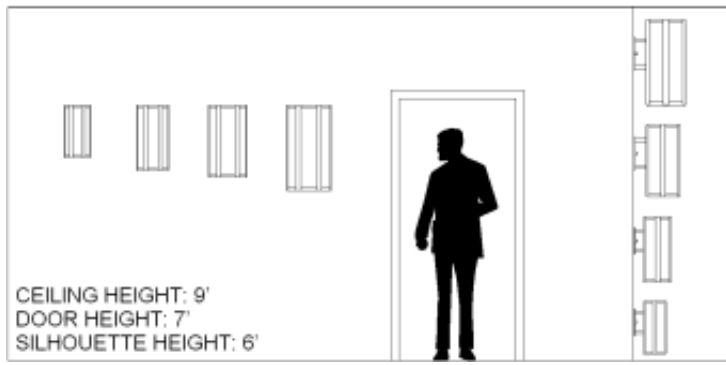
### Abbreviation Key

#### Dimensions

W	Width
HT	Height
EXT	Extension

#### Lamps

100W A21      Medium Base, 100W Max, Incandesent or LED



## PRODUCT FEATURES

- Fabricated and welded metal housing
- Powder coated metallic finish
- UV stable, white acrylic diffuser (Standard)
- Optional specialty diffuser materials available
- Energy efficient LED or fluorescent lamping
- Wired for single circuit operation (Body Lamping)
- High power factor electronic ballast or LED driver
- Incandescent lamping is Triac or ELV dimmable - consult lamp and dimmer manufacturer for compatibility.
- Optional dimming ballast 120V or 277V (LED or fluorescent lamping)
- Mounts to standard electrical junction box (by others)
- LED Battery Back-Up Available
- UL / cUL or ETL / cETL listed
- Contact Us for more lamping options.

150W A21

150W A21, medium base

### Finish Types

PC Powder Coat

### Diffuser Types

AD Standard Acrylic Diffuser

AG Premium Glass Diffuser

### Mountings

WM Wall Mount

### Louvers

CR Concentric Ring

SQ Square Cell

### Options

SIL Silhouette Symbol

D1 LED 0-10V low voltage control dimming