

## Raleigh Series Wall Bracket



| Model Number   | Lamping Code | Body Lamping      | Circuit | Finish | Diffuser | Mounting | Louver   | Options   |
|--|--------------|-------------------|---------|--------|----------|----------|----------|-----------|
| <b>RL0816B</b>   | DED          | 2,100lm LED (15W) | 1       | PC     | AD<br>AG | WM       | CR<br>SQ | D1<br>SIL |
|  | ACK          | 1-100W A21 (100W) | 1       | PC     | AD<br>AG | WM       | CR<br>SQ | SIL       |
| <ul style="list-style-type: none"> <li>• W 8"</li> <li>• HT 16"</li> <li>• EXT 10"</li> </ul>  |              |                   |         |        |          |          |          |           |
| <b>RL1020B</b>   | DEE          | 3,200lm LED (23W) | 1       | PC     | AD<br>AG | WM       | CR<br>SQ | D1<br>SIL |
|  | ACM          | 1-150W A21 (150W) | 1       | PC     | AD<br>AG | WM       | CR<br>SQ | SIL       |
| <ul style="list-style-type: none"> <li>• W 10"</li> <li>• HT 20"</li> <li>• EXT 12"</li> </ul> |              |                   |         |        |          |          |          |           |
| <b>RL1224B</b>   | FEJ          | 4,400lm LED (33W) | 1       | PC     | AD<br>AG | WM       | CR<br>SQ | D1<br>SIL |
|  | FEI          | 1-150W A21 (150W) | 1       | PC     | AD<br>AG | WM       | CR<br>SQ | SIL       |
| <ul style="list-style-type: none"> <li>• W 12"</li> <li>• HT 24"</li> <li>• EXT 14"</li> </ul> |              |                   |         |        |          |          |          |           |
| <b>RL1426B</b>   | DEG          | 6,300lm LED (47W) | 1       | PC     | AD<br>AG | WM       | CR<br>SQ | D1<br>SIL |
|  | ACR          | 2-150W A21 (300W) | 1       | PC     | AD<br>AG | WM       | CR<br>SQ | SIL       |
| <ul style="list-style-type: none"> <li>• W 14"</li> <li>• HT 26"</li> <li>• EXT 16"</li> </ul> |              |                   |         |        |          |          |          |           |

### SAMPLE CATALOG NUMBER

**Model Number - Lamping Code - Finish - Mounting - Diffuser - Options**

### Scale

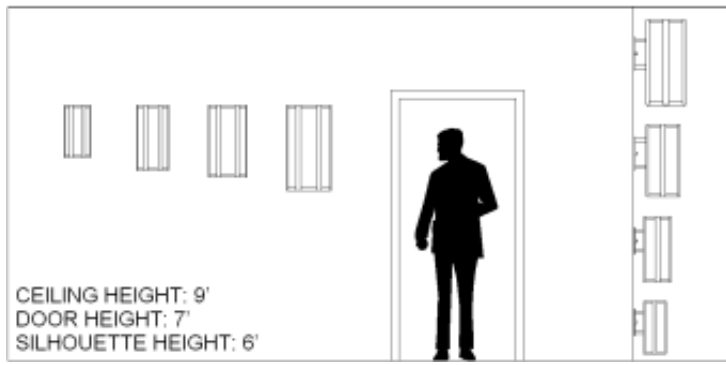
### Abbreviation Key

#### Dimensions

|     |           |
|-----|-----------|
| W   | Width     |
| HT  | Height    |
| EXT | Extension |

#### Lamps

100W A21 Medium Base, 100W Max, Incandesent or LED



#### PRODUCT FEATURES

- Fabricated and welded metal housing
- Powder coated metallic finish
- UV stable, white acrylic diffuser (Standard)
- Optional specialty diffuser materials available
- Energy efficient LED or fluorescent lamping
- Wired for single circuit operation (Body Lamping)
- High power factor electronic ballast or LED driver
- Incandescent lamping is Triac or ELV dimmable - consult lamp and dimmer manufacturer for compatibility.
- Optional dimming ballast 120V or 277V (LED or fluorescent lamping)
- Mounts to standard electrical junction box (by others)
- LED Battery Back-Up Available
- UL / cUL or ETL / cETL listed
- Contact Us for more lamping options.

150W A21      150W A21, medium base

#### Finish Types

PC      Powder Coat

#### Diffuser Types

AD      Standard Acrylic Diffuser

AG      Premium Glass Diffuser

#### Mountings

WM      Wall Mount

#### Louvers

CR      Concentric Ring

SQ      Square Cell

#### Options

SIL      Silhouette Symbol

D1      LED 0-10V low voltage control dimming