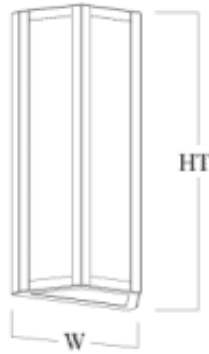


Norwich Series Wall Sconce



Model Number	Lamping Code	Body Lamping	Circuit	Finish	Diffuser	Mounting	Options
NW0816S • W 8 • HT 20 • EXT 4	DYP	1,000lm LED (6W)	1	PC	AD AG	WM	BD BL D1
	DYQ	2,300lm LED (13W)	1	PC	AD AG	WM	BD BL D1
	ANG	1-60W A19 (60W)	1	PC	AD AG	WM	BL BD
NW1020S • W 10 • HT 25 • EXT 5	DYR	2,300lm LED (13W)	1	PC	AD AG	WM	BD BL D1
	DYS	3,800lm LED (23W)	1	PC	AD AG	WM	BD BL D1
	ANI	2-100W A21 (200W)	1	PC	AD AG	WM	BL BD
NW1224S • W 12 • HT 29 • EXT 6	FEF	6,300lm LED (39W)	1	PC	AD AG	WM	BD BL D1
	FEG	7,100lm LED (45W)	1	PC	AD AG	WM	BD BL D1
	FEE	3-100W A21 (300W)	1	PC	AD AG	WM	BL BD
NW1426S • W 14 • HT 32 • EXT 7	DYV	6,300lm LED (39W)	1	PC	AD AG	WM	BD BL D1
	DDX	8,200lm LED (53W)	1	PC	AD AG	WM	BD BL D1
	ANN	3-100W A21 (300W)	1	PC	AD AG	WM	BL BD

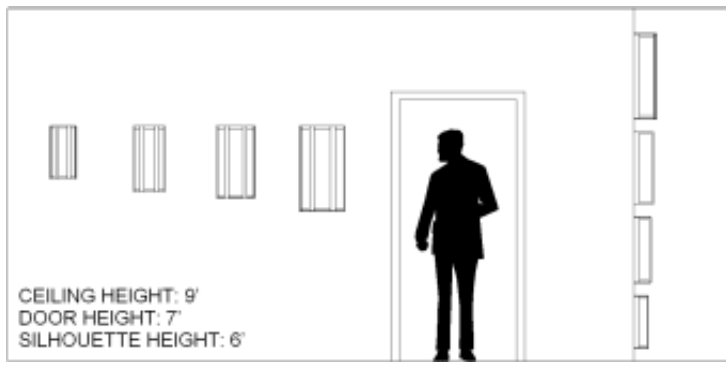
SAMPLE CATALOG NUMBER

Model Number - Lamping Code - Finish - Mounting - Diffuser - Options

Scale

Abbreviation Key

Dimensions



PRODUCT FEATURES

- Fabricated and welded metal housing
- Powder coated metallic finish
- UV stable, white acrylic diffuser (Standard)
- Optional specialty diffuser materials available
- Energy efficient LED or fluorescent lamping
- Wired for single circuit operation (Body Lamping)
- High power factor electronic ballast or LED driver
- Incandescent lamping is Triac or ELV dimmable - consult lamp and dimmer manufacturer for compatibility.
- Optional dimming ballast 120V or 277V (LED or fluorescent lamping)
- Mounts to standard electrical junction box (by others)
- LED Battery Back-Up Available
- UL / cUL or ETL / cETL listed
- Contact Us for more lamping options.

W	Width
HT	Height
EXT	Extension

Lamps

60W A19	Medium Base, 60W Max, Incandescent or LED
100W A21	Medium Base, 100W Max, Incandescent or LED

Finish Types

PC	Powder Coat
----	-------------

Diffuser Types

AD	Standard Acrylic Diffuser
AG	Premium Glass Diffuser

Mountings

WM	Wall Mount
----	------------

Dimming

0	D1
---	----

Options

BL	Bottom Lens
BD	Bottom Door