

Norwich Series Wall Bracket



Model Number	Lamping Code	Body Lamping	Circuit	Finish	Diffuser	Mounting	Louver	Options
NW0816B • W 8" • HT 16" • EXT 10"	DEH	2,100lm LED (15W)	1	PC	AD AG	WM	CR SQ	BL D1
	ANP	1-100W A21 (100W)	1	PC	AD AG	WM	CR SQ	BL
NW1020B • W 10 • HT 25 • EXT 12	DAG	3,100lm LED (23W)	1	PC	AD AG	WM	CR SQ	BL D1
	ANR	1-150W A21 (150W)	1	PC	AD AG	WM	CR SQ	BL
NW1224B • W 12 • HT 29 • EXT 14	FEL	5,300lm LED (33W)	1	PC	AD AG	WM	CR SQ	BL D1 D31 D32
	FEK	1-150W A21 (150W)	1	PC	AD AG	WM	CR SQ	BL
NW1426B • W 14 • HT 32 • EXT 16	DEK	6,300lm LED (47W)	1	PC	AD AG	WM	CR SQ	BL D1
	ANW	2-150W A21 (300W)	1	PC	AD AG	WM	CR SQ	BL

SAMPLE CATALOG NUMBER

Model Number - Lamping Code - Finish - Mounting - Diffuser - Options

Scale

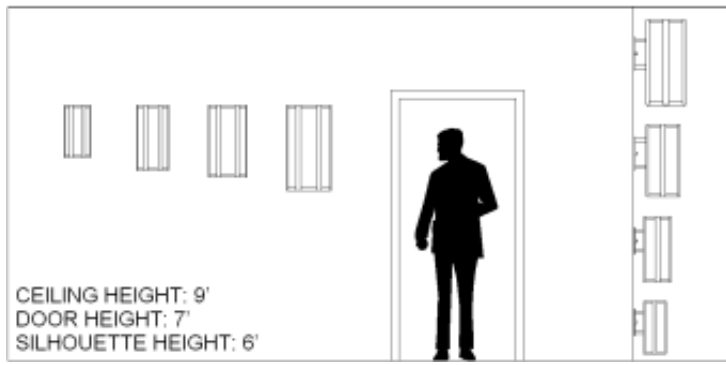
Abbreviation Key

Dimensions

W	Width
HT	Height
EXT	Extension

Lamps

100W A21 Medium Base, 100W Max, Incandesent or LED



PRODUCT FEATURES

- Fabricated and welded metal housing
- Powder coated metallic finish
- UV stable, white acrylic diffuser (Standard)
- Optional specialty diffuser materials available
- Energy efficient LED or fluorescent lamping
- Wired for single circuit operation (Body Lamping)
- High power factor electronic ballast or LED driver
- Incandescent lamping is Triac or ELV dimmable - consult lamp and dimmer manufacturer for compatibility.
- Optional dimming ballast 120V or 277V (LED or fluorescent lamping)
- Mounts to standard electrical junction box (by others)
- LED Battery Back-Up Available
- UL / cUL or ETL / cETL listed
- Contact Us for more lamping options.

150W A21 150W A21, medium base

Finish Types

PC Powder Coat

Diffuser Types

AD Standard Acrylic Diffuser

AG Premium Glass Diffuser

Mountings

WM Wall Mount

Louvers

CR Concentric Ring

SQ Square Cell

Dimming

0 D1

3 D31

4 D32

Options

BL Bottom Lens