

Houston Series Wall Bracket



Model Number	Lamping Code	Body Lamping	Circuit	Finish	Diffuser	Mounting	Louver	Options
HO0816B • W 8" • HT 16" • EXT 10"	DED	2,100lm LED (15W)	1	PC	AD AG	WM	CR SQ	BL CN D1 SIL
	ACK	1-100W A21 (100W)	1	PC	AD AG	WM	CR SQ	SIL BL CN
HO1020B • W 10" • HT 20" • EXT 12"	DEE	3,200lm LED (23W)	1	PC	AD AG	WM	CR SQ	BL CN D1 SIL
	ACM	1-150W A21 (150W)	1	PC	AD AG	WM	CR SQ	SIL BL CN
HO1224B • W 12" • HT 24" • EXT 14"	FEJ	4,400lm LED (33W)	1	PC	AD AG	WM	CR SQ	BL CN D1 SIL
	FEI	1-150W A21 (150W)	1	PC	AD AG	WM	CR SQ	SIL BL CN
HO1426B • W 14" • HT 26" • EXT 16"	DEG	6,300lm LED (47W)	1	PC	AD AG	WM	CR SQ	BL CN D1 SIL
	ACR	2-150W A21 (300W)	1	PC	AD AG	WM	CR SQ	SIL BL CN

SAMPLE CATALOG NUMBER

Model Number - Lamping Code - Finish - Mounting - Diffuser - Options

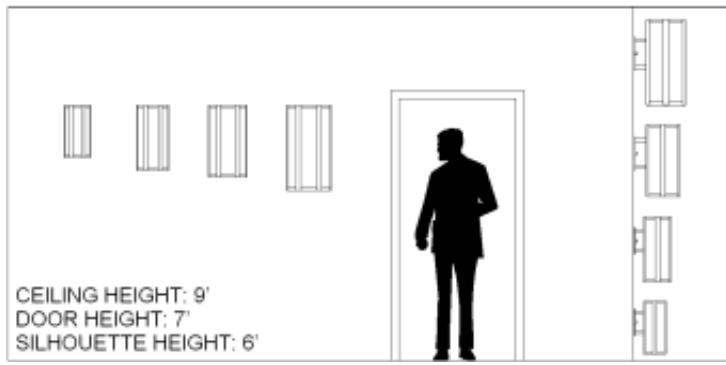
Scale

Abbreviation Key

Dimensions

W Width
HT Height
EXT Extension

Lamps



100W A21 Medium Base, 100W Max, Incandescent or LED
150W A21 150W A21, medium base

Finish Types

PC Powder Coat

Diffuser Types

AD Standard Acrylic Diffuser

AG Premium Glass Diffuser

Mountings

WM Wall Mount

Louvers

CR Concentric Ring

SQ Square Cell

Dimming

0 D1

Options

SIL Silhouette Symbol

BL Bottom Lens

CN Cone Top

PRODUCT FEATURES

- Fabricated and welded metal housing
- Powder coated metallic finish
- UV stable, white acrylic diffuser (Standard)
- Optional specialty diffuser materials available
- Energy efficient LED or fluorescent lamping
- Wired for single circuit operation (Body Lamping)
- High power factor electronic ballast or LED driver
- Incandescent lamping is Triac or ELV dimmable - consult lamp and dimmer manufacturer for compatibility.
- Optional dimming ballast 120V or 277V (LED or fluorescent lamping)
- Mounts to standard electrical junction box (by others)
- LED Battery Back-Up Available
- UL / cUL or ETL / cETL listed
- Contact Us for more lamping options.