

## Houston Series Wall Bracket



Model Number	Lamping Code	Body Lamping	Circuit	Finish	Diffuser	Mounting	Louver	Options
<b>HO0816B</b> • W 8" • HT 16" • EXT 10"	DED	2,100lm LED (15W)	1	PC	AD AG	WM	CR SQ	BL CN D1 SIL
	ACK	1-100W A21 (100W)	1	PC	AD AG	WM	CR SQ	SIL BL CN
<b>HO1020B</b> • W 10" • HT 20" • EXT 12"	DEE	3,200lm LED (23W)	1	PC	AD AG	WM	CR SQ	BL CN D1 SIL
	ACM	1-150W A21 (150W)	1	PC	AD AG	WM	CR SQ	SIL BL CN
<b>HO1224B</b> • W 12" • HT 24" • EXT 14"	FEJ	4,400lm LED (33W)	1	PC	AD AG	WM	CR SQ	BL CN D1 SIL
	FEI	1-150W A21 (150W)	1	PC	AD AG	WM	CR SQ	SIL BL CN
<b>HO1426B</b> • W 14" • HT 26" • EXT 16"	DEG	6,300lm LED (47W)	1	PC	AD AG	WM	CR SQ	BL CN D1 SIL
	ACR	2-150W A21 (300W)	1	PC	AD AG	WM	CR SQ	SIL BL CN

### SAMPLE CATALOG NUMBER

**Model Number - Lamping Code - Finish - Mounting - Diffuser - Options**

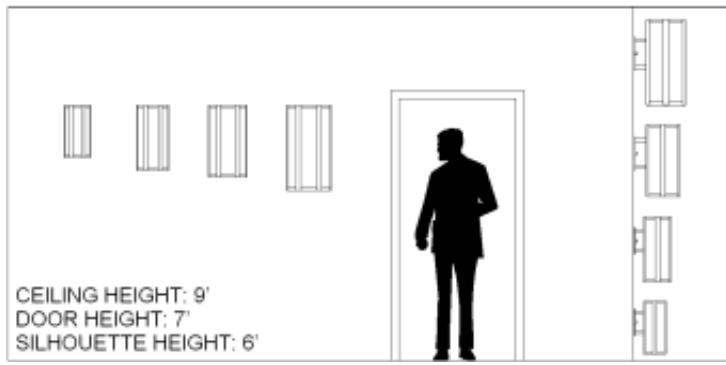
Scale

Abbreviation Key

#### Dimensions

W            Width  
HT           Height  
EXT          Extension

Lamps



100W A21	Medium Base, 100W Max, Incandescent or LED
150W A21	150W A21, medium base

#### Finish Types

PC	Powder Coat
----	-------------

#### Diffuser Types

AD	Standard Acrylic Diffuser
AG	Premium Glass Diffuser

#### Mountings

WM	Wall Mount
----	------------

#### Louvers

CR	Concentric Ring
SQ	Square Cell

#### Dimming

0	D1
---	----

#### Options

SIL	Silhouette Symbol
BL	Bottom Lens
CN	Cone Top

#### PRODUCT FEATURES

- Fabricated and welded metal housing
- Powder coated metallic finish
- UV stable, white acrylic diffuser (Standard)
- Optional specialty diffuser materials available
- Energy efficient LED or fluorescent lamping
- Wired for single circuit operation (Body Lamping)
- High power factor electronic ballast or LED driver
- Incandescent lamping is Triac or ELV dimmable - consult lamp and dimmer manufacturer for compatibility.
- Optional dimming ballast 120V or 277V (LED or fluorescent lamping)
- Mounts to standard electrical junction box (by others)
- LED Battery Back-Up Available
- UL / cUL or ETL / cETL listed
- Contact Us for more lamping options.