

Hagerstown Series Wall Bracket



Model Number	Lamping Code	Body Lamping	Circuit	Finish	Diffuser	Mounting	Louver	Options
HG0816B • W 8 • HT 16 • EXT 10	DED	2,100lm LED (16W)	1	PC	AD AG	WM	CR SQ	BL CN D1
	ACK	1-100W A21 (100W)	1	PC	AD AG	WM	CR SQ	BL CN
HG1020B • W 10 • HT 22 • EXT 12	DEE	3,100lm LED (22W)	1	PC	AD AG	WM	CR SQ	BL CN D1
	ACM	1-100W A21 (100W)	1	PC	AD AG	WM	CR SQ	BL CN
HG1224B • W 12 • HT 24 • EXT 14	FEJ	4,400lm LED (33W)	1	PC	AD AG	WM	CR SQ	BL CN D1
	FEI	1-100W A21 (100W)	1	PC	AD AG	WM	CR SQ	BL CN
HG1426B • W 14 • HT 29 • EXT 16	DEG	6,300lm LED (47W)	1	PC	AD AG	WM	CR SQ	BL CN D1
	ACR	2-100W A21 (200W)	1	PC	AD AG	WM	CR SQ	BL CN

SAMPLE CATALOG NUMBER

Model Number - Lamping Code - Finish - Mounting - Diffuser - Options

Scale

Abbreviation Key

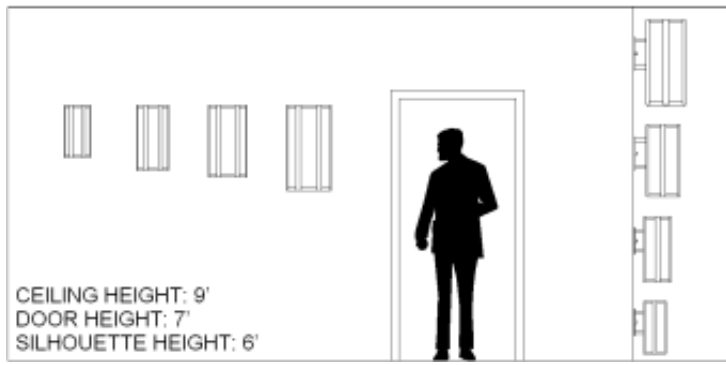
Lamps

100W A21 Medium Base, 100W Max, Incandesent or LED

Finish Types

PC Powder Coat

Diffuser Types



PRODUCT FEATURES

- Fabricated and welded metal housing
- Powder coated metallic finish
- UV stable, white acrylic diffuser (Standard)
- Optional specialty diffuser materials available
- Energy efficient LED or fluorescent lamping
- Wired for single circuit operation (Body Lamping)
- High power factor electronic ballast or LED driver
- Standard LED color temperature is 3000K with 80 CRI. Contact us for other color temperature or CRI options.
- Incandescent lamping is Triac or ELV dimmable - consult lamp and dimmer manufacturer for compatability.
- Optional dimming ballast 120V or 277V (LED or fluorescent lamping)
- Mounts to standard electrical junction box (by others)
- LED Battery Back-Up Available
- UL / cUL or ETL / cETL listed
- Contact Us for more lamping options.

- AD Standard Acrylic Diffuser
- AG Premium Glass Diffuser

Mountings

- WM Wall Mount

Louvers

- CR Concentric Ring
- SQ Square Cell

Dimming

- D1 LED 0-10v dimming options include integral 120-277v dimming drivers

Options

- BL Bottom Lens
- CN Cone Top