

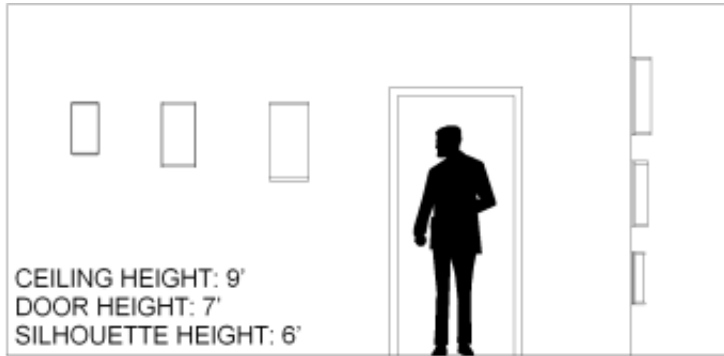
Waycross Series Wall Sconce



SAMPLE CATALOG NUMBER
Model Number - Lamping Code - Finish - Hanging - Diffuser - Options

Model	Lamping Options									
Model Number	Lamping Code	Body Lamping	Voltage	Circuit	Finish	Diffuser	Options	Dimensions		
WC0816S	DYW	1,000lm LED (8W)	120/277	1	PC	AC	BD	W	11"	
	DYK	2,100lm LED (17W)	120/277	1				BL	HT	18"
	BPA	1-F27BX (26W)	120/277	1				CC	OAH	N/A
	AHS	1-60A19 (60W)	120	1				DM	EXT	6"
							MC			
							TC			
WC1020S	DYL	2,100lm LED (17W)	120/277	1	PC	AC	BD	W	14"	
	DYM	3,100lm LED (24W)	120/277	1				BL	HT	22"
	BMW	1-F39BX (39W)	120/277	1				CC	OAH	N/A
	AHU	2-100A19 (200W)	120	1				DM	EXT	7"
							MC			
							TC			
WC1224S	DYN	5,600lm LED (44W)	120/277	1	PC	AC	BD	W	16"	
	DYO	6,300lm LED (48W)	120/277	1				BL	HT	27"
	AHY	2-F39BX (77W)	120/277	1				CC	OAH	N/A
	AHX	3-100A19 (300W)	120	1				DM	EXT	8"
							MC			
							TC			

Scale



PRODUCT FEATURES

- Fabricated and welded metal housing

Abbreviation Key

Dimensions

W	Width
HT	Height
OAH	Overall Height
EXT	Extension

Lamp Descriptions

60A19	60W A19, medium base
100A19	100W A19, medium base
F27BX	27W high lumen biax, 4-PIN 2G11 base
F39BX	39W high lumen biax, 4-PIN 2G11 base

- Powder coated metallic finish
- UV stable, white acrylic diffuser (Standard)
- Optional specialty diffuser materials available
- Energy efficient LED or fluorescent lamping
- Wired for single circuit operation (Body Lamping)
- High power factor electronic ballast or LED driver
- Optional dimming ballast 120V or 277V (LED or fluorescent lamping)
- Mounts to standard electrical junction box (by others)
- LED Battery Back-Up Available
- UL / cUL or ETL / cETL listed
- Contact Us for more lamping options.

LED 3000 Kelvin Warm White LED

Finishes

PC Powder Coat

Diffusers

AC White Acrylic Cylinder

Options

DM Dimming
 DIM-010 0-10V four wire control dimming
 BL Bottom Louver
 BD Bottom Diffuser
 MC Modern Cross
 TC Triple Cross
 CC Celtic Cross