

Hartford Series Wall Bracket



SAMPLE CATALOG NUMBER

Model Number - Lamping Code - Finish - Hanging - Diffuser - Options

Model	Lamping Options								
Model Number	Lamping Code	Body Lamping	Voltage	Circuit	Finish	Diffuser	Options	Dimensions	
HF0816B	DED	2,100lm LED (16W)	120/277	1	PC	AD	BD	W	8"
	ACL	1-F32TBX (39W)	120/277	1		AG	BL	HT	18"
	ACK	1-100A19 (100W)	120	1		GA	DM	OAH	N/A
						E	EXT	10"	
						LOGO			
						SBL			
HF1020B	DEE	3,100lm LED (24W)	120/277	1	PC	AD	BD	W	10"
	BPU	1-F39BX (39W)	120/277	1		AG	BL	HT	22"
	ACM	1-200A21 (200W)	120	1		GA	DM	OAH	N/A
						E	EXT	12"	
						LOGO			
						SBL			
HF1222B	DEF	4,700lm LED (38W)	120/277	1	PC	AD	BD	W	12"
	ACQ	2-F39BX (78W)	120/277	1		AG	BL	HT	24"
	ACP	1-300PS25 (300W)	120	1		GA	DM	OAH	N/A
						E	EXT	14"	
						LOGO			
						SBL			
HF1426B	DEG	6,300lm LED (50W)	120/277	1	PC	AD	BD	W	14"
	ACS	2-F40BX (82W)	120/277	1		AG	BL	HT	29"
	ACR	2-200A21 (400W)	120	1		GA	DM	OAH	N/A
						E	EXT	16"	
						LOGO			
						SBL			

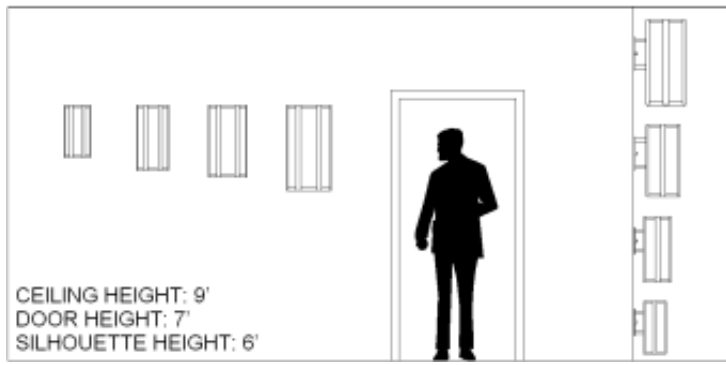
Scale

Abbreviation Key

Dimensions

W	Width
HT	Height
OAH	Overall Height
EXT	Extension

Lamp Descriptions



PRODUCT FEATURES

- Fabricated and welded metal housing
- Powder coated metallic finish
- UV stable, white acrylic diffuser (Standard)
- Optional specialty diffuser materials available
- Energy efficient LED or fluorescent lamping
- Wired for single circuit operation (Body Lamping)
- High power factor electronic ballast or LED driver
- Optional dimming ballast 120V or 277V (LED or fluorescent lamping)
- Mounts to standard electrical junction box (by others)
- LED Battery Back-Up Available
- UL / cUL or ETL / cETL listed
- Contact Us for more lamping options.

100A19	100W A19, medium base
200A21	200W A21, medium base
300PS25	300W PS25, medium base
F39BX	39W high lumen biax, 4-PIN 2G11 base
F40BX	40W high lumen biax, 4-PIN 2G11 base
F32TBX	32W triple biax, 4-PIN GX24q-3 base
LED	3000 Kelvin Warm White LED

Finishes

PC	Powder Coat
----	-------------

Diffusers

AD	Acrylic (White Acrylic Standard)
AG	Art Glass
GA	Glass Alternative

Options

DM	Dimming
DIM-010	0-10V four wire control dimming
E	Exterior Fixture Modification Available For Some Models-Contact Manufacturer
BL	Bottom Lens
BD	Bottom Door
SBL	Symbol
LOGO	Custom Logo