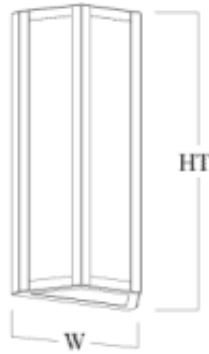


Hebron Series Wall Sconce



SAMPLE CATALOG NUMBER

Model Number - Lamping Code - Finish - Hanging - Diffuser - Options

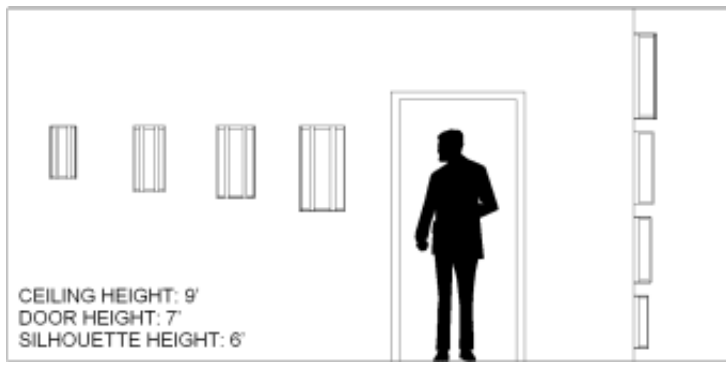
Model	Lamping Options										
Model Number	Lamping Code	Body Lamping	Voltage	Circuit	Finish	Diffuser	Options	Dimensions			
HB0816S	DYD	1,000lm LED (8W)	120/277	1	PC	AD	BD	W	8"		
	DYE	2,100lm LED (16W)	120/277	1				AG	BL	HT	16"
	BOZ	1-F27BX (27W)	120/277	1				GA	CC	OAH	N/A
	ACB	1-60A19 (60W)	120	1					DM	EXT	4"
							E				
							MC				
							TC				
HB1020S	DYF	2,100lm LED (17W)	120/277	1	PC	AD	BD	W	10"		
	DYG	3,100lm LED (24W)	120/277	1				AG	BL	HT	20"
	BMV	1-F39BX (39W)	120/277	1				GA	CC	OAH	N/A
	ACD	2-100A19 (200W)	120	1					DM	EXT	5"
							E				
							MC				
							TC				
HB1222S	DYH	5,600lm LED (44W)	120/277	1	PC	AD	BD	W	12"		
	DYI	6,300lm LED (48W)	120/277	1				AG	BL	HT	22"
	ACH	2-F39BX (77W)	120/277	1				GA	CC	OAH	N/A
	ACG	3-100A19 (300W)	120	1					DM	EXT	6"
							E				
							MC				
							TC				
HB1426S	DDT	6,300lm LED (50W)	120/277	1	PC	AD	BD	W	14"		
	DYJ	8,400lm LED (66W)	120/277	1				AG	BL	HT	26"
	ACJ	2-F40BX (77W)	120/277	1				GA	CC	OAH	N/A
	ACI	3-150A21 (450W)	120	1					DM	EXT	7"
							E				
							MC				
							TC				

Scale

Abbreviation Key

Dimensions

W	Width
HT	Height
OAH	Overall Height
EXT	Extension



PRODUCT FEATURES

- Fabricated and welded metal housing
- Powder coated metallic finish
- UV stable, white acrylic diffuser (Standard)
- Optional specialty diffuser materials available
- Energy efficient LED or fluorescent lamping
- Wired for single circuit operation (Body Lamping)
- High power factor electronic ballast or LED driver
- Optional dimming ballast 120V or 277V (LED or fluorescent lamping)
- Mounts to standard electrical junction box (by others)
- LED Battery Back-Up Available
- UL / cUL or ETL / cETL listed
- Contact Us for more lamping options.

Lamp Descriptions

60A19	60W A19, medium base
100A19	100W A19, medium base
150A21	150W A21, medium base
F27BX	27W high lumen biax, 4-PIN 2G11 base
F39BX	39W high lumen biax, 4-PIN 2G11 base
F40BX	40W high lumen biax, 4-PIN 2G11 base
LED	3000 Kelvin Warm White LED

Finishes

PC	Powder Coat
----	-------------

Diffusers

AD	Acrylic (White Acrylic Standard)
AG	Art Glass
GA	Glass Alternative

Options

DM	Dimming
DIM-010	0-10V four wire control dimming
E	Exterior Fixture Modification Available For Some Models-Contact Manufacturer
BL	Bottom Lens
BD	Bottom Door
MC	Modern Cross
TC	Triple Cross
CC	Celtic Cross